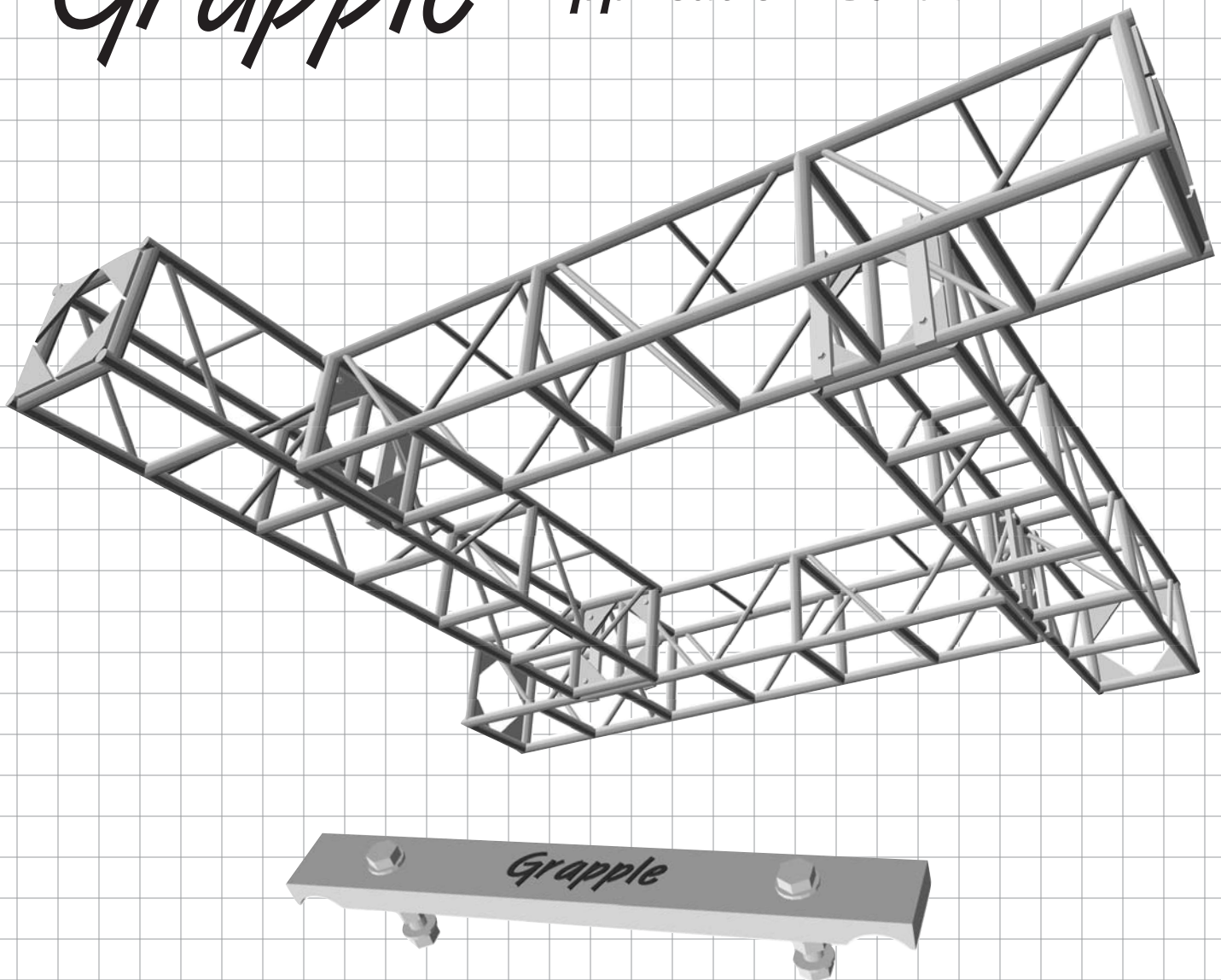


# The Grapple™ Application Guide



*The Grapple allows you to make inline 90 degree connections between similar trusses anywhere along a perpendicular primary truss. The load capacity of the inline truss will carry 75 percent of the manufacturer's load rating. The primary truss must have point load calculations taken into consideration. The secondary trusses must be supported at both ends. Cantilevering of truss is not recommended.*

*See over for safety warning, other applications and approved accessories*



## LOS ANGELES

10643 Glenoaks Blvd.  
Pacoima, CA 91331  
USA

Tel: +1 818.899.8818  
Fax: +1 818.899.8813

## LONDON

2 Commerce Road  
Brentford, Middx TW8 8LR  
UK

Tel: +44 (0)20.8560.9652  
Fax: +44 (0)20.8560.1064

## NEW YORK

100-D W. Forest Avenue  
Englewood, NJ 07631  
USA

Tel: +1 201.541.9292  
Fax: +1 201.541.8448

## BEIJING

Unit 4, Blk 7, Shizipo  
Dongzhimenwai  
Dongcheng District  
Beijing, China 100027

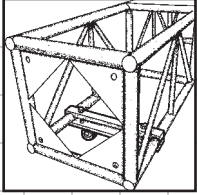
Tel: +86 10.6417.2286  
Fax: +86 10.6415.9475

## TORONTO

409 Saddler St. West  
Box 654, Durham  
Ontario N0G-1R0

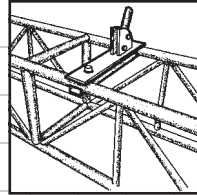
Tel: +1 519.369.9990  
Fax: +1 519.369.9992

# The Grapple™ Application Guide



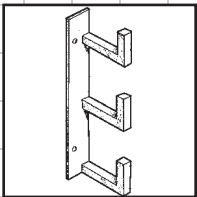
## CASTER PLATE ATTACHMENT • REQUIRES CASTER PLATE ACCESSORY

Now you can temporarily attach wheels to your box trusses, easily removing them for applications that require clear accessibility on all four sides.



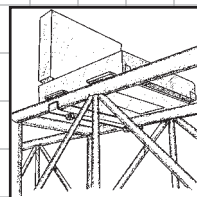
## FOLLOW SPOT YOKE MOUNT • REQUIRES SPOT YOKE ACCESSORY

Provides an economical, secure way to attach a follow spot to your truss. Spigot accepts most medium sized spotlight yokes.



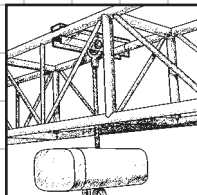
## CABLE CRADLE ATTACHMENT • REQUIRES CABLE CRADLE ACCESSORY

Keeps cable out of the way of riggers, technicians and spot operators. Conveniently organize cable to prevent tangling.



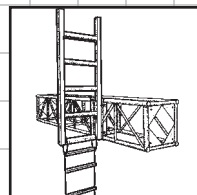
## FOLLOW SPOT SEAT MOUNT • REQUIRES SPOT SEAT ACCESSORY

Provides an economical, secure way to attach a follow spot operator seat to your truss. Includes seat belt.



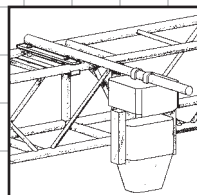
## MOTOR POINT ATTACHMENT • REQUIRES MOTOR POINT ACCESSORY

The motor point attachment allows a chain hoist to be attached directly to the truss with no additional hardware. Will support a 1 ton (2,000 pound) load. Available for medium-duty, heavy-duty, and PRT truss only.



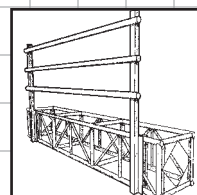
## TRUSS ACCESS LADDER • REQUIRES TRUSS LADDER ACCESSORY

Finally there is an easier and safer way to access your rig. Now you can simply climb up a wire rope ladder onto the grapple ladder and safely step onto the top of the truss. Will safely support a 200 pound worker with a 200 pound worker anchoring the rope ladder at the floor.



## OUTRIGGER ATTACHMENT • REQUIRES POST/OUTRIGGER ACCESSORY

The post/outrigger unit in a horizontal position will support lights, cable, traveler tracks etc. Will support a load, perpendicular to the truss, at a distance beyond the truss face. Load weight not to exceed 6900 pound-inches, e.g. 300 pounds at 23 inches from truss face.



## SIDE POST ATTACHMENT • REQUIRES POST/OUTRIGGER ACCESSORY

The post/outrigger assembly provides secure vertical support. It can be used for fixture mounting or as support for a handrail system on catwalks and spot bridges. Capable of supporting a handrail load of 200 pounds at a standard handrail height of 42 inches above the truss face. Spacing between vertical members must not exceed 12 foot 6 inches if used for handrail.

### WARNING!

**Grapples must be installed by qualified rigging personnel only. Incorrect use of Grapples may cause hazardous conditions and possible injury. Only use Grapples for applications and loadings described in TMB's Grapple Application Guide. A qualified engineer must approve all other applications. Use TMB Grapple accessories only.**